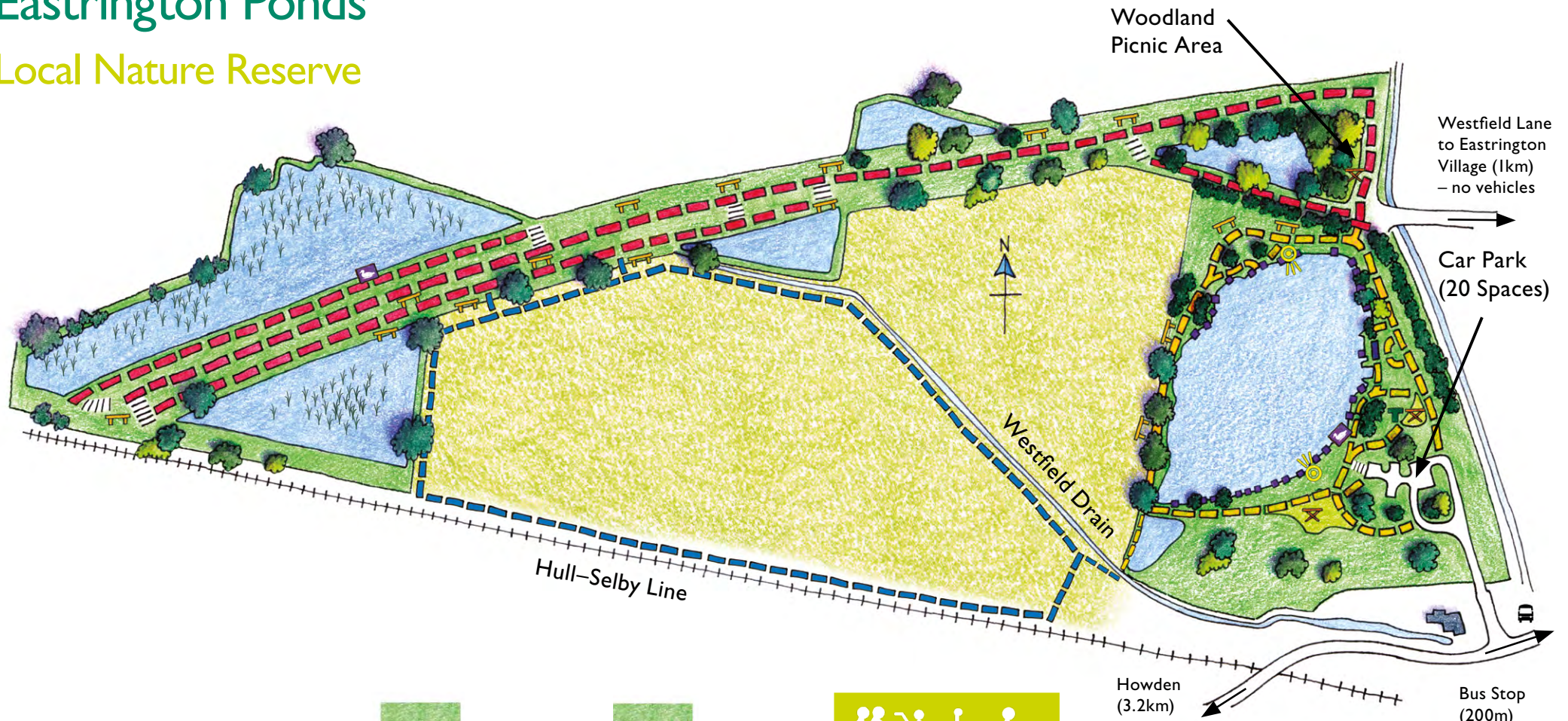


# Eastrington Ponds

## Local Nature Reserve



### USEFUL CONTACTS

Countryside Officer

(01482) 395210

Police (non-emergencies)

101

East Riding of Yorkshire Council 24 Hour Call Centre

(01482) 393939

Countryside Access

[www.eastridingcoastandcountryside.co.uk](http://www.eastridingcoastandcountryside.co.uk)

[countrysideaccess@eastriding.gov.uk](mailto:countrysideaccess@eastriding.gov.uk)

Tourist Information

(01482) 391672



Railway Trail  
(2km)



Reed Bed



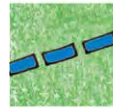
Viewing Point



Steps



Bird Hide



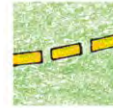
Permissive Path



Picnic Area



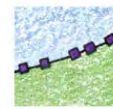
Bird Feeding Station



Pond Trail  
(0.5km)



Bench



Fishing Pegs